



LANDMANN



PLANCHA 4.0

USER MANUAL

ENGLISH

#9828

SAVE THESE INSTRUCTIONS FOR FUTURE REFERENCE

THIS GAS GRILL IS DESIGNED FOR OUTDOOR USE ONLY

IMPORTANT INFORMATION

Read all instructions and operating steps carefully before using this appliance. Follow each step in the correct order and never allow children to operate or play near the grill.

WARNINGS

This appliance is intended for outdoor use only. Read the manual carefully before use. Accessible parts may become very hot during operation, so always keep children and pets away. The appliance must never be moved while it is in use. After cooking, turn off the gas supply at the cylinder.

Do not modify the appliance in any way. Components sealed by the manufacturer or an authorized agent must not be altered by the user. Any unauthorized modification may cause injury or property damage and will void the warranty.

ATTENTION

Some parts of this appliance become extremely hot during use. Always use heat-resistant gloves and take extra care when children or elderly persons are present nearby.

FOR YOUR SAFETY

Do not store or use gasoline, alcohol, or any other flammable vapors or liquids near this or any other appliance. Never attempt to light the grill using gasoline or similar fluids. The appliance should only be used with the original components and assembly supplied by the manufacturer.

LPG CYLINDER SAFETY

Some liquid gas suppliers may fill cylinders beyond their safe capacity. Overfilled cylinders can create dangerous pressure levels, which may cause the safety valve to

release flammable gas vapor.

To reduce this risk, always instruct the gas supplier to fill the cylinder to no more than 80 percent of its total capacity. Spare or disconnected gas cylinders must never be stored under or near the grill, or close to any heat or ignition source.

USE AND CHARACTERISTICS

This barbecue grill is designed for safe and easy outdoor cooking. Always make sure that the correct gas pressure is used according to the specifications of the appliance. Food can be cooked with the lid open or closed, but if the lid remains closed for more than five minutes, it must be opened for at least one minute to release heat. The appliance is equipped with a grease tray or grease cup located beneath the main body to collect residues.

Adequate ventilation is essential for proper combustion and safe operation. Never use the grill in an enclosed or covered area such as a garage, tent, or patio with a roof. When the wind speed exceeds two meters per second, the grill should not be positioned facing the wind. The appliance is for outdoor use only.

Accessible parts become very hot during use, so care must be taken to prevent contact. Do not move the appliance while in use and always turn off the gas supply at the cylinder or regulator after cooking. Any modification to the appliance is dangerous and may result in injury or property damage. Parts sealed by the manufacturer or their representative must not be tampered with. Any unauthorized modification will void the manufacturer's warranty.

Never position the gas cylinder underneath the barbecue on the base shelf. Doing so can lead to serious injury or damage to property. Always use protective gloves when handling hot components.

INSTALLATION CLEARANCES



The appliance must be installed with a minimum clearance of one meter on all sides and must not be placed under any overhead obstruction such as trees, shrubs, or roofs. It must be kept away from flammable materials including petroleum-based products, thinners, paints, and any objects marked with a flammable warning label.

Always close the gas cylinder valve or regulator after use to ensure safety.

PROHIBITED USE

This appliance must never be used indoors or in any enclosed area. The accumulation of gas in confined spaces is extremely dangerous and can cause fire, explosion, or suffocation. Use the grill outdoors only, in a well-ventilated area.

1. Technical data

| Manufactured & Imported by GARE BBQ & Outdoor AB Faktorvägen 17M 434 37 Kungsbacka, SWEDEN | | info@gare.se www.landmann.se +46313891060 | | Product name: Plancha 4.0 Pin Number: Model Number: 9828 | |
|---|--|--|---|--|--|
| Country of Destination | Appliance Category | Gas and Supply Pressure | Injector Size Ø | Total Nominal Heat Inputs (Hs) | |
| BE,CY,DK,EE,FI, HU,LT,NL,NO,SE,SI , GB | I3+(28-30/37) <input type="checkbox"/> | Butane(G30) 28-30 mbar | 0.76mm | 10.0 kW 727g/h | |
| | | Propane(G31) 37 mbar | 0.76mm | 10.0 kW 727g/h | |
| CY,DK,EE,FI,HU,LT, NL,NO,SE,SI,SK,RO, HR,TR,BG,LU,MT | I3B/P(30) <input type="checkbox"/> | Butane/Propane 30 mbar | 0.76mm | 10.0 kW 727g/h | |
| AT,CH,DE,SK | I3B/P(50) <input type="checkbox"/> | Butane/Propane 50 mbar | 0.66mm | 10.0 kW 727g/h | |
| PL | I3B/P(37) <input type="checkbox"/> | Butane/Propane 37 mbar | 0.70mm | 10.0 kW 727g/h | |
| <p>Use outdoors only. Read the instructions before using this appliance. Do not place the gas cylinder inside the barbecue. Warning: Accessible parts may become very hot. Keep young children away. The hood must remain open when the burner(s) are in operation.</p> | | | | | |
| | | |  2531-26 | |  LANDMANN |
| Made in P.R.C | | | | | |

Select the correct gas regulator according to the appliance category and the required gas pressure, as shown in the technical table.

MODEL CORRESPONDENCE TABLE

| Model Name | Main Burner No. | Side Burner No. |
|------------|-----------------|-----------------|
| 9828 | 4 | 0 |

2. Mounting Steps

Before using the grill, make sure it has been correctly assembled.

Each unit is supplied with a detailed assembly manual that describes the specific procedures for your model. Follow these instructions carefully to ensure proper and safe assembly of the appliance.

Caution: Although every effort has been made to make the assembly process as simple as possible, fabricated steel components may have sharp edges or corners. Handle all parts carefully during assembly to avoid cuts or injuries. It is strongly recommended to wear protective work gloves during assembly.

3. Preparation

To operate this gas grill, you will need a suitable LPG gas cylinder and a regulator that matches the required operating pressure. The regulator must comply with **EN16129** (latest version) and relevant national regulations. For further information, refer to Section 6 of this manual.

Energy Saving Tips

To reduce gas consumption, keep the lid closed whenever possible during cooking. Turn off the grill immediately after you finish cooking. Preheat the grill for **10–15 minutes** only, except on the first use, and avoid preheating longer than recommended. Do not use a higher heat setting than necessary for the food being prepared.

Connect the gas hose and regulator to the gas cylinder on the **left-hand side** of the grill.

Ensure that the gas cylinder is placed **upright**, kept away from heat sources, and positioned in a **stable and safe location**. The gas hose should have an inner diameter of **8–10 mm** and a maximum length of **1.5 meters**.

4. Installation

Once you have obtained a suitable gas cylinder, you can proceed with installation.

When changing or connecting a cylinder, always perform the operation away from open flames or any ignition source. The gas cylinder must be positioned on the **left-hand side** of the grill and must **never be placed inside** the barbecue body. Keep the cylinder upright, away from heat, and in a well-ventilated area.

When preparing to use the grill, insert the regulator into the cylinder valve and tighten it securely by hand.



Warning: Before attempting to light the grill, carefully read the **Lighting Instructions** and **Safety Information** sections of this manual.

Before each use, inspect the gas hose for cracks, cuts, or abrasions. If any damage is detected, do not use the grill until the hose has been replaced.

When changing the gas cylinder, make sure that there are **no open flames, lit cigarettes, or other ignition sources** nearby. Always confirm that the grill is switched off before disconnecting or reconnecting the gas supply.

Ensure that the gas hose is installed without twisting or tension, as this may restrict gas flow. The hose must not come into contact with any hot parts of the grill. Use only a **flexible gas hose** rated for temperatures above **80 °C**. The hose should be replaced every **two years**, or earlier if required by local regulations.

Changing or Connecting the Gas Cylinder

When changing the gas cylinder, first ensure that the **cylinder valve is closed**.

No tools or spanner are required for this process. The gas cylinder used should not exceed **80 cm in height** and **35 cm in width**.

To connect a gas bottle, rotate the orange safety cap so that the arrow aligns with the gap in the protective shroud. Remove the orange cap by pulling the lanyard outward — do not use tools — and allow the cap to remain attached and hanging.

Check that the **black sealing washer** is properly fitted inside the cylinder valve, then connect the **regulator** securely to the valve. Turn the switch clockwise to open the gas supply, and proceed to light the grill following the instructions provided in this manual.

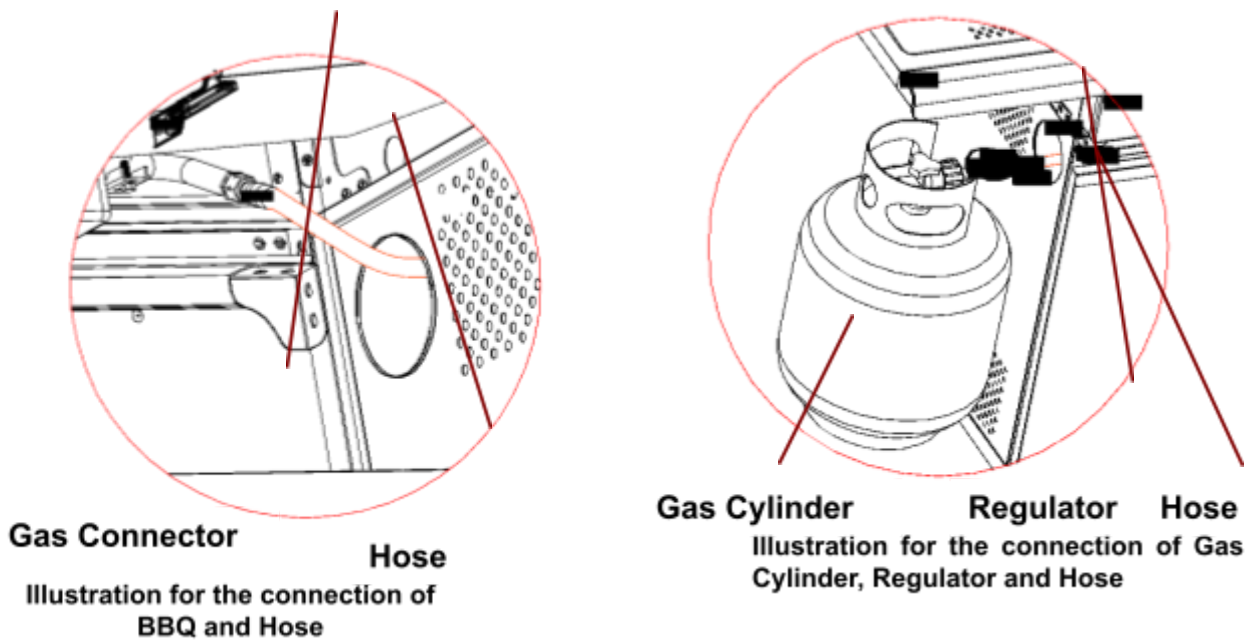


Figure 1

Warning

Always test all gas connections for leaks after assembly or maintenance.

Apply a **soapy water solution** to each connection and look for bubbles indicating a leak.

Never use a naked flame to test for gas leaks.

How to Disconnect a Gas Bottle

For single-cylinder setups, turn off the **gas tap or valve** on the appliance if fitted. Wait until the burners and pilot lights have completely extinguished.

For twin-cylinder systems equipped with a **changeover valve**, simply switch off the empty cylinder.

Once disconnected, **replace the orange safety cap** securely on the empty cylinder.

Always perform this procedure away from open flames or other ignition sources.

5. Warnings and Safety Points

Read the following safety points carefully before using the grill.

Failure to follow these instructions may result in malfunction, fire, injury, or property

damage.

This gas grill is designed **for outdoor use only**.

Accessible parts become **very hot** during operation. Keep young children and pets at a safe distance.

Always use **protective, heat-resistant gloves** when handling hot components.

If a **gas leak** is suspected, immediately turn off the gas supply at the cylinder.

Extinguish all open flames and open the grill lid.

If the leak persists, check for visible damage or poor connections.

If you cannot locate or fix the problem, contact your **local gas dealer** or service technician.

Do not move the grill while it is in use.

Never use or store flammable liquids, vapors, or materials near the grill during operation.

Do not use a naked flame to test for leaks.

If you detect a gas leak, **do not operate** the appliance. Turn off the gas supply immediately.

Do not attempt to disconnect any gas fittings or components while the grill is in use or connected to a gas source.

The grill must never be left unattended while operating. After use, always turn off the gas supply at the cylinder or regulator.

Clean the grill after every use to ensure safe and efficient performance.

Do not obstruct the **air or fire openings** of the burner compartment. If these become blocked, carefully clear them using a **1.6 mm round rod or wire**.

When cleaning the burner or valves, take care **not to enlarge** any burner ports or nozzle openings.

This appliance must **never be used in enclosed spaces** such as garages, sheds, or covered patios.

Keep it away from **flammable materials** including paint, solvents, and fuel containers. Maintain a **minimum clearance of 0.5 to 1 meter** from all combustible materials.

It is recommended that the grill be **serviced at least once per year** by a qualified technician or authorized gas retailer.

Do not attempt to repair, service, or modify the appliance yourself.

Any unauthorized modification of the appliance is dangerous and will void the warranty.

Do not tamper with or alter the main gas control components, including taps, injectors, or valves.



Figure 2



Warning – Hot Handle

WARNING: The black section of the handle (see illustration above) will become **very hot** while the grill is in use.

Exercise caution and **do not touch** the black area during or immediately after operation.

6. Safety Precautions

Always test all gas connections for leaks using a **soapy water solution** after assembly or maintenance. Never use a naked flame to check for leaks.

The **lid must always remain open** when lighting the burners.

When cooking, always use **heat-resistant oven gloves** and sturdy, long-handled barbecue tools.

Be prepared in the event of an accident or fire. Know the location of your **first aid kit** and **fire extinguisher**, and ensure you understand how to use them.

Keep both the **electrical supply cord** and the **gas supply hose** away from all heated surfaces.

Always cook with care and remain attentive while the grill is in use.

Do not heat **unopened glass or metal containers** on the grill. Pressure may build up inside the container, causing it to burst and potentially result in serious injury or damage to the appliance.

7. Lighting Instructions

Caution: The **lid must be open** when lighting the burner.

Do not place your face directly above the grill when igniting it.

Your gas grill uses the following ignition method:

Pilot Gas Control Ignition (Main Burner / Main Burner with Side Burner)

1. Ensure that all gas control knobs on the grill are in the “**OFF**” position.
2. Turn the **gas cylinder valve** to the open position at the regulator.
3. To create a spark, press and hold the **control knob (A)** for **3–5 seconds** to allow gas to flow. Then turn the knob **anticlockwise to the “HIGH” position (B)**.
4. You will hear a “**click**” or “**snap**” from the igniter and should see an **orange flame** appear from the **burner lighting tube (C)** located on the left side of the burner (D).
5. Continue to hold the control knob for **an additional two seconds** after ignition to allow full gas flow through the burner tube (E) and ensure proper ignition.
6. Once lit, adjacent burners will **cross-light automatically** when their controls are turned to the “**HIGH**” position.
7. At the “HIGH” setting, the burner flame should be approximately **12–20 mm** long, with minimal orange coloration. Turn the control knob fully **anticlockwise** to set the burner to its minimum output.

If you experience difficulty lighting the grill, contact your **authorized dealer** for assistance.

If the **automatic ignition system** does not function, remove the cooking grill and heat diffuser (hotplate). Turn the burner valve **anticlockwise 90°**, then ignite using a **long barbecue lighter** held approximately **5 mm** from the burner outlet. Once the burner is lit, carefully replace the cooking grill and diffuser. Always wear **flame-resistant, heatproof gloves** when performing manual ignition.



Warning:

If the burner does not ignite, turn the control knob to the “**OFF**” position and wait **at least 5 minutes** to allow any unburned gas to disperse before attempting to light it again.

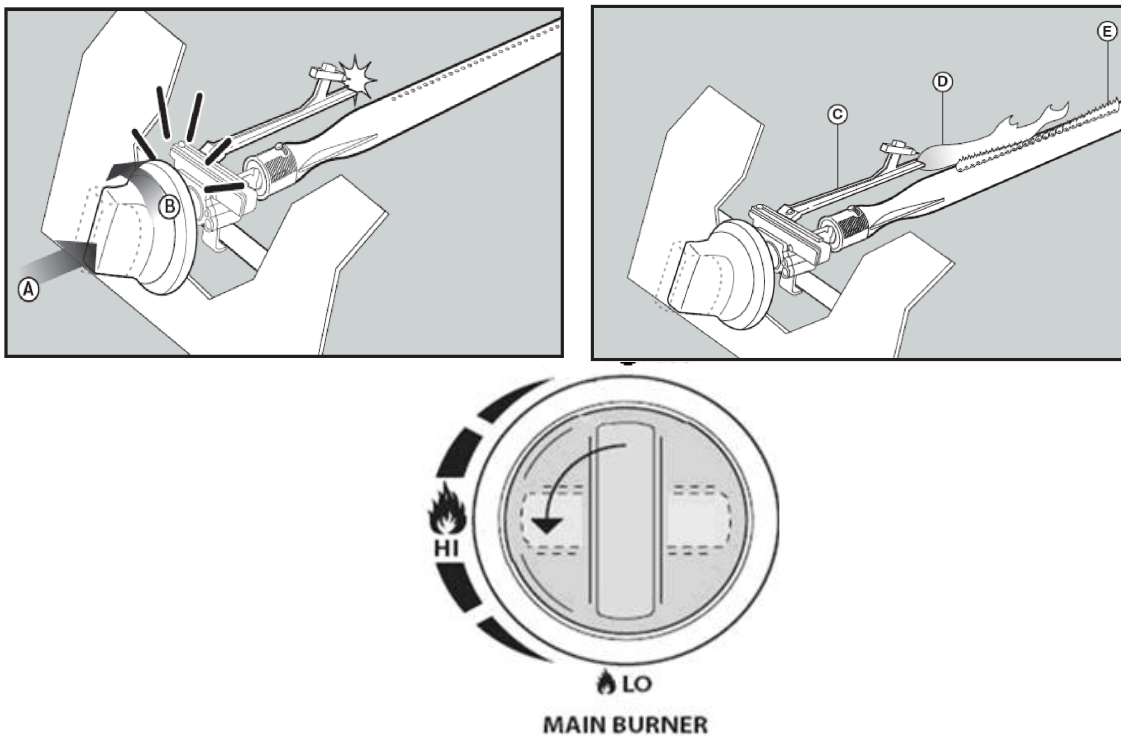


Figure 3

8. Storage

When not in use, the gas cylinder must always be stored outdoors in a well-ventilated area and disconnected from the grill. Before disconnecting the gas bottle, make sure you are outdoors and that there are no open flames or other ignition sources nearby.

After a period of storage, inspect the grill thoroughly before use. Check for any gas leaks, blockages in the burners, or other obstructions that could affect performance. Follow the cleaning instructions in this manual to ensure that the appliance is safe to operate.

If the grill is stored outdoors, make sure that the area beneath the front control panel is free from insects, nests, or other debris. This space must remain clear at all times, as any obstruction could interfere with combustion or ventilation airflow.

9. Cleaning Instructions

Regular maintenance is essential for the safe and efficient operation of your gas grill. It is recommended to inspect and clean the appliance every ninety days and to perform a complete maintenance check at least once per year. By doing so, you will extend the

service life of your grill and maintain consistent performance.

Always ensure that the gas supply is turned off and that the appliance has cooled completely before cleaning. Remove the cooking grids and heat diffusers and wash them in warm, soapy water. Rinse thoroughly and dry them before placing them back in the grill. Clean the exterior surfaces with a damp cloth and avoid abrasive cleaners or scouring pads that may damage the finish.

Inspect the burner openings and venturi tubes regularly to ensure they are free from grease, insects, or dust. Any blockages can be removed gently with a brush, piece of wire, or pipe cleaner. It is also important to check all gas connections from time to time using a mild soap-water solution to confirm that no leaks are present.

A clean and well-maintained grill provides better safety, more even cooking results, and a longer lifespan for your appliance.

Troubleshooting Guide

| Emergencies | Possible Cause | Prevention / Solution |
|--|---|---|
| Gas leaking from cracked, cut, or burned hose | Damaged hose | Turn off gas at the LP cylinder. If the hose is cut or cracked, replace it immediately. Refer to the LP tank leak test and connection instructions in this manual. |
| Gas leaking from LP tank | Mechanical failure due to corrosion or mishandling | Turn off the LP tank valve and contact your gas supplier. |
| Gas leaking from LP tank valve | Faulty or damaged valve caused by mishandling or mechanical wear | Turn off the LP tank valve and return the cylinder to your gas supplier for inspection or replacement. |
| Gas leaking between LP tank and regulator connection | Improper installation, loose connection, or damaged rubber seal | Turn off the LP tank valve. Remove the regulator, inspect the rubber seal for damage, and reinstall securely. Refer to the LP tank connection instructions. |
| Fire coming through control panel | Fire inside burner tube caused by partial blockage (insects, rust, or grease) | Turn off all control knobs and the LP tank valve. Once the fire is extinguished and the grill is cool, remove the burner and inspect for obstructions. Clean thoroughly before reuse. |

| Troubleshooting – Problem | Possible Cause | Prevention / Solution |
|--|--|--|
| Grease fire or continuous excessive flames above the cooking surface | Excess grease buildup in the burner area | Turn off the LP tank and leave the lid open until the flames die down. Once the grill has cooled, clean all grease and food residue from the firebox, grease tray, and surrounding surfaces. |
| Burner will not light using ignitor (gas issues) | <ol style="list-style-type: none"> 1. Wrong burner selected 2. Burner not connected properly 3. Burner obstructed 4. No gas flow 5. Vapor lock at coupling nut 6. Coupling nut not fully connected | <ol style="list-style-type: none"> 1. Verify correct burner control knob. 2. Ensure valve is correctly positioned inside burner tube. 3. Check and clean burner tubes for blockages. 4. Confirm LP tank is not empty. 5. Turn off knobs, disconnect and reconnect coupling nut. 6. Tighten coupling nut half to three-quarters turn. |
| Burner will not light using ignitor (electrical issues) | <ol style="list-style-type: none"> 1. Electrode cracked or misaligned 2. Dirty or greasy electrode/wire 3. Loose or disconnected wires 4. Shorting or stuck ignitor | <ol style="list-style-type: none"> 1. Replace electrode. 2. Adjust electrode tip (3–5 mm gap). 3. Clean with alcohol. 4. Reconnect or replace wires. 5. Replace ignitor if faulty. |
| Burner will not light with a match | Improper lighting technique or gas issue | Follow 'Pilot Gas Control Ignition' procedure in manual. |
| Sudden drop in gas flow or low flame | Grease buildup or excessive fat | Clean burners and firebox interior. Trim fat and reduce cooking temperature. |
| Flames blow out during use | High wind, low gas level, or excess flow valve activated | Turn grill away from wind or increase flame height. Refill LP tank if low. See 'Sudden Drop in Gas Flow.' |
| Persistent grease fire | Grease trapped by food buildup around burner system | Turn all knobs OFF and close LP tank valve. Leave lid closed until fire burns out. Once cooled, disassemble and clean. |
| Flashback (fire in burner tube) | Burners or tubes blocked by grease, insects, or debris | Turn knobs OFF and close LP tank valve. After cooling, clean burner and tubes as |

| | | |
|--|--|---|
| | | described in cleaning section. |
| Flare-up during cooking | Grease buildup or excessive fat or temperature | Clean burners and grill interior. Trim fat and lower temperature. |
| Unable to fill LP tank | Worn or incompatible fill nozzle | Try another LP gas supplier with compatible nozzle. |
| One burner does not light from another | Grease or food blocking carry-over tube | Clean the carry-over tube thoroughly with a wire brush. |

If a problem cannot be resolved using the information provided in this manual, contact your local gas dealer or service technician for further assistance.

After use, allow the grill to cool completely before cleaning. To remove cooking residues, ignite the burners for fifteen to twenty minutes to burn off excess grease. Once the appliance has cooled, clean the grids by soaking and washing them in warm, soapy water. The interior surfaces of the grill lid and housing should also be cleaned with hot, soapy water. For stubborn stains, use a wire brush, steel wool, or a scouring pad.

Inspect the burners regularly to ensure they are free from insects, spider webs, and other obstructions that could interfere with gas flow. The venturi pipes must also be cleaned carefully to maintain proper combustion. A flexible wire or pipe cleaner can be used to clear the venturi openings.

Any modification of this appliance is strictly prohibited and may cause a serious safety hazard.

10. Gas Grill Safety Hints

Always place your gas grill on a stable, level surface away from flammable materials such as wooden fences, overhanging tree branches, or other combustible objects. This grill is designed for outdoor use only and must never be operated indoors or in enclosed areas.

Once the grill is lit, do not move it or leave it unattended. Keep children and pets at a safe distance at all times. Always keep a fire extinguisher nearby in case of emergency.

The grill becomes extremely hot during use. Use protective gloves when handling the lid, cooking surfaces, or any metal parts. Before storing the appliance, ensure it has cooled down completely.

This grill is for outdoor use only. Read and follow all operating instructions carefully

before lighting. Accessible parts become very hot during operation, so take appropriate precautions to prevent burns. Do not move the grill while it is in use, and always turn off the gas supply at the cylinder after cooking. Any modification of the appliance is dangerous and strictly forbidden.



Imported by:

**GARE BBQ & Outdoor AB
Faktorvägen 17M
434 37 Kungsbacka
SWEDEN**

**info@gare.se
www.landmann.se
+46313891060**